



The Scientific Romance Theatre Company  
31 2F1 Bread Street  
Edinburgh  
EH3 9AL

Running Time:

The Time Machine runs at approximately 55 minutes with no interval

Get In:

The company consists of 3 performers and one Stage Manager / Technician.  
The company travel in a long wheel base van. Parking for is required either at or close to the venue.

The get in will take approximately 4 hours. We will require 1 technician from the venue competent in lighting and sound to assist in the get in and set up of the show.

Laundry:

The use of laundry facilities (washing machine, dryer, iron and ironing board) would be appreciated where possible.

Green Room:

The use of green room area with access to tea and coffee making facilities would be appreciated where possible.

Set:

The Time Machine requires a minimum playing space of at least 5m x 5m. The ability to create a good black out is desirable but is not essential for all venues. Please advise if this would be the case

The set consists of a vinyl floor measuring 4m x 3m, 3 backing flats measuring approximately 2m high by 4m wide which sit across the back line of the vinyl floor, an electric stove (of which only the light is used) a table and several puppets and props of varying size.



### Lighting:

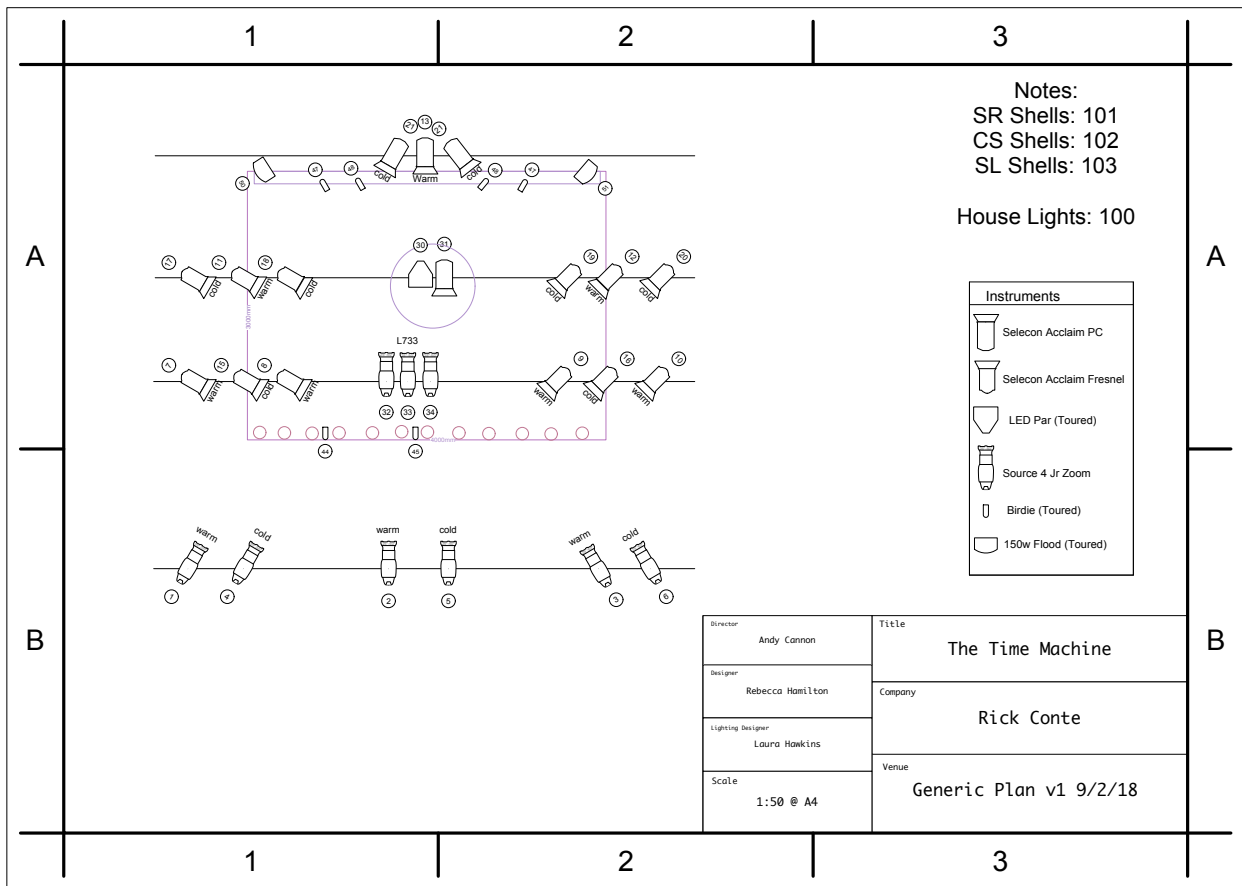
Lighting plan attached for theatre venues. A pre rig would be appreciated where possible.

There are electrics within the set consisting of 3 groups of footlights with LED bulbs, 2 small floods attached to the back of the set, 6 birdies attached to the top of the set and 3 birdies on the floor batten (requiring 12 ways of dimming in total at floor level) We have one LED par which will be required to be hung CS above the table. This will need 13a power.

For non theatre venues the company tour with 2 x dimmer racks (run off 32a single phase but can be adapted down to 13a if required), 2 x lighting stands, 2 x 650w profiles and 4 x 575w fresnels which will give a basic rig to be supported by any lighting equipment that may be in the venue.

Hard power is required USR to power the stove.

Lighting is run from a Nomad on a Macbook operated by the Stage Manager / Technician.



### Sound:

We require the use of the in-house PA with the ability to pan to stage left and right. A stage monitor is also required. Sound is operated from a MacBook running Qlab 4 and a mini sampler which requires an additional 2 channels. This is operated by the Stage Manager / Technician.

### Get Out

The get out should take approximately 1 hour.

Any questions then please get in touch.

Rick Conte  
[rickconte@hotmail.com](mailto:rickconte@hotmail.com)  
 07828 040223

Matt Rudkin  
[mattrudkin@hotmail.com](mailto:mattrudkin@hotmail.com)